

BITSIGHT FOR HEALTHCARE

# Mitigating Cybersecurity Risks in Healthcare

Focus on patients, not attackers

## Healthcare Security: Stay Ahead of Cyber Threats

Healthcare organizations face unique cybersecurity challenges, including increased attacks on sensitive medical data and stringent compliance requirements. The stakes are high — bad actors can hijack computer systems and restrict access to critical data, shut down systems and equipment, or delay life-saving procedures. Get ahead of a cyber attack so you can focus on what's really important: helping the patients in your healthcare system.

From safeguarding protected health information (PHI) against ransomware to mitigating vulnerabilities in IoT medical devices, Bitsight's unique capabilities and insights are tailored to prevent the financial, reputational, regulatory, and human impact of cyberattacks and data breaches in the healthcare sector. For example, Bitsight's Continuous Monitoring can help you identify vendors posing a higher risk compared to its industry peers before a breach — so you can take action and be more prepared.

## Highlights

- 1**  
Enhanced patient trust & compliance
- 2**  
More reliable healthcare operations with reduced system downtime
- 3**  
Proactive cybersecurity management

**Elizabeth Olson Lennon**

DIRECTOR OF VENDOR MANAGEMENT,  
ALAMEDA ALLIANCE FOR HEALTH



We've been able to alert our vendors of problems before they happen, so they're aware of the issue before it costs them, and us."

ALAMEDA  
**Alliance**  
FOR HEALTH



## Extended Attack Surface Visibility

Gain a panoramic view of exposure across your digital ecosystem, including IoT and third-party risks, to preempt potential breaches.



## Comprehensive Risk Assessments

Make informed decisions around vulnerable devices, poor credentials, and the potential financial and legal risk of your vendors.



## Regulatory Compliance

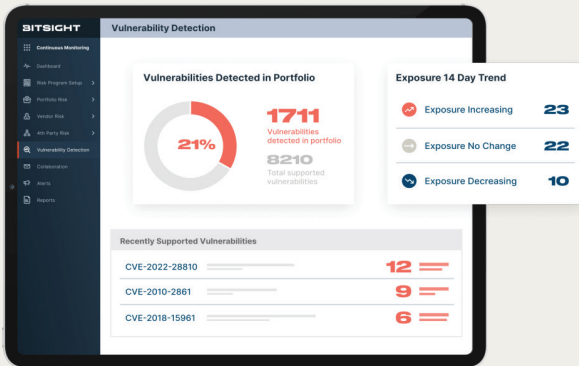
Navigate healthcare regulations like HIPAA with confidence, using continuous risk monitoring and standardized questionnaires.



## Enhanced Resilience

Leverage risk analytics to strengthen your defense against cyber threats, keeping patient data safe and operations uninterrupted.

# Secure your healthcare attack surface and supply chain

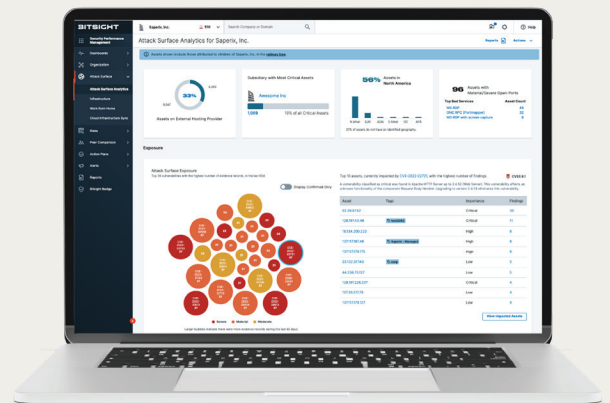


Safeguard components and internet-connected devices throughout your digital supply chain. Conduct thorough vendor risk assessments, mitigate risks proactively, and continuously monitor all your providers— from pharmaceutical suppliers to medical device manufacturers— ensuring every link upholds stringent healthcare security standards.

[Explore Third-Party Risk Management](#) →

Gain unique exposure visibility across your external attack surface, including vulnerable or exposed medical devices—and bring them into your robust security standards. Benchmark your security posture and see how your performance stacks up to other healthcare companies so you can communicate with context and make more informed decisions.

[Explore External Attack Surface Management](#) →



Bitsight is a cyber risk management leader transforming how companies manage exposure, performance, and risk for themselves and their third parties. Companies rely on Bitsight to prioritize their cybersecurity investments, build greater trust within their ecosystem, and reduce their chances of financial loss. Built on over a decade of technological innovation, its integrated solutions deliver value across enterprise security performance, digital supply chains, cyber insurance, and data analysis.

BOSTON (HQ)    RALEIGH    NEW YORK    LISBON    SINGAPORE

